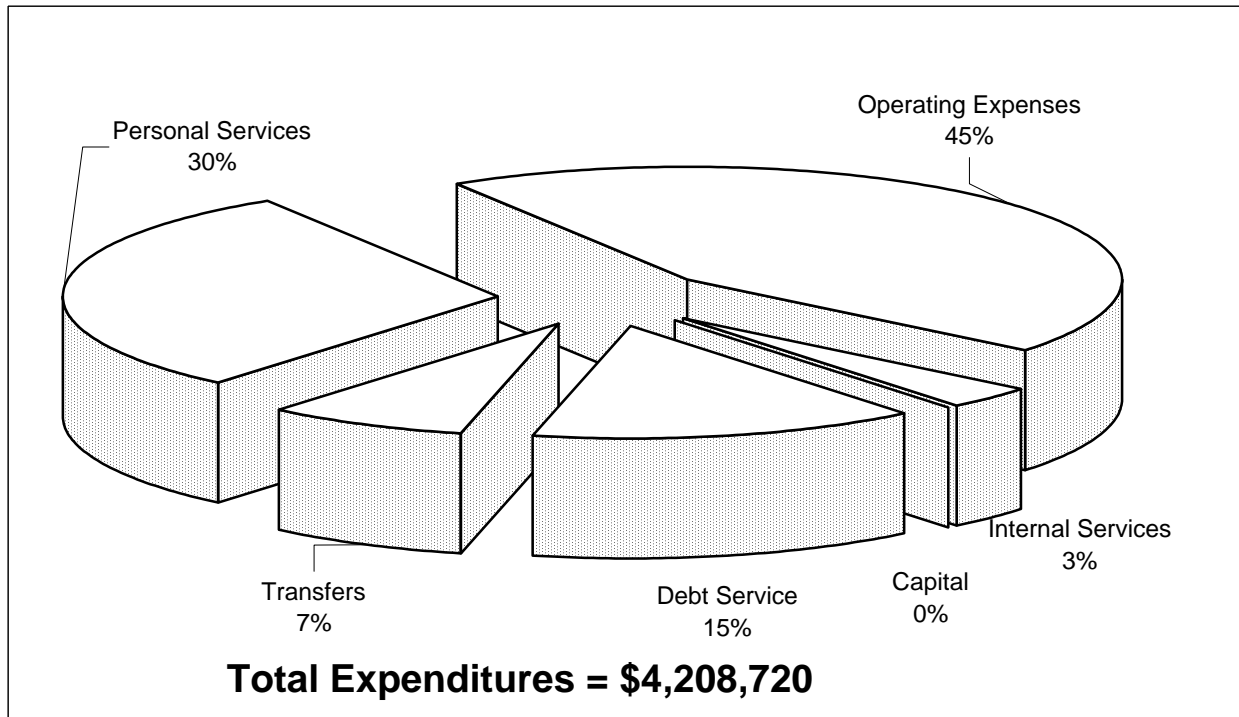


Parking Fund Expenditures by Type



Parking operating revenues are generated through parking receipts, rentals, and miscellaneous income derived from day-to-day operations. These revenues are used for the general operations of the Parking System, the Parking Enforcement program, the Beach Guard Operation at Clearwater Beach and for improvements and repairs to parking facilities. The latest rate increase was for downtown parking (meters, garage & permits) in December 1, 2002.

The Parking Fund contains three operations: 1) Parking Operations; 2) Parking Enforcement, both of which are contained in the Public Works Administration/Engineering Department; and 3) the Beach Guard Operations Program in the Marine & Aviation Department. Thirty-eight and one tenth (38.1) full-time equivalent positions are funded by these revenues, resulting in 30% of expenditures being personnel related. The Parking Enforcement Program was established in June of 2003 to provide a dedicated enforcement of parking both downtown and at the beach. Forty-five percent of all fund expenditures are related to operating expenses, some of which are \$257,000 to support the Jolley Trolley, and \$430,000 for a contractual service to operate the attendant parking lots at the beach. The 7% of expenditures labeled transfers are the \$310,000 transferred to the Capital Improvement Program to fund parking lot resurfacing and improvements, repairs to City owned parking garages, and air-conditioning repairs to the Life Guard Building.

Anticipated revenues for Fiscal Year 2004/05 are approximately \$4,902,720 and exceed anticipated expenditures by approximately \$694,000. Fiscal year end 9/30/2003 financial statements reflect a net income of approximately \$861,496.