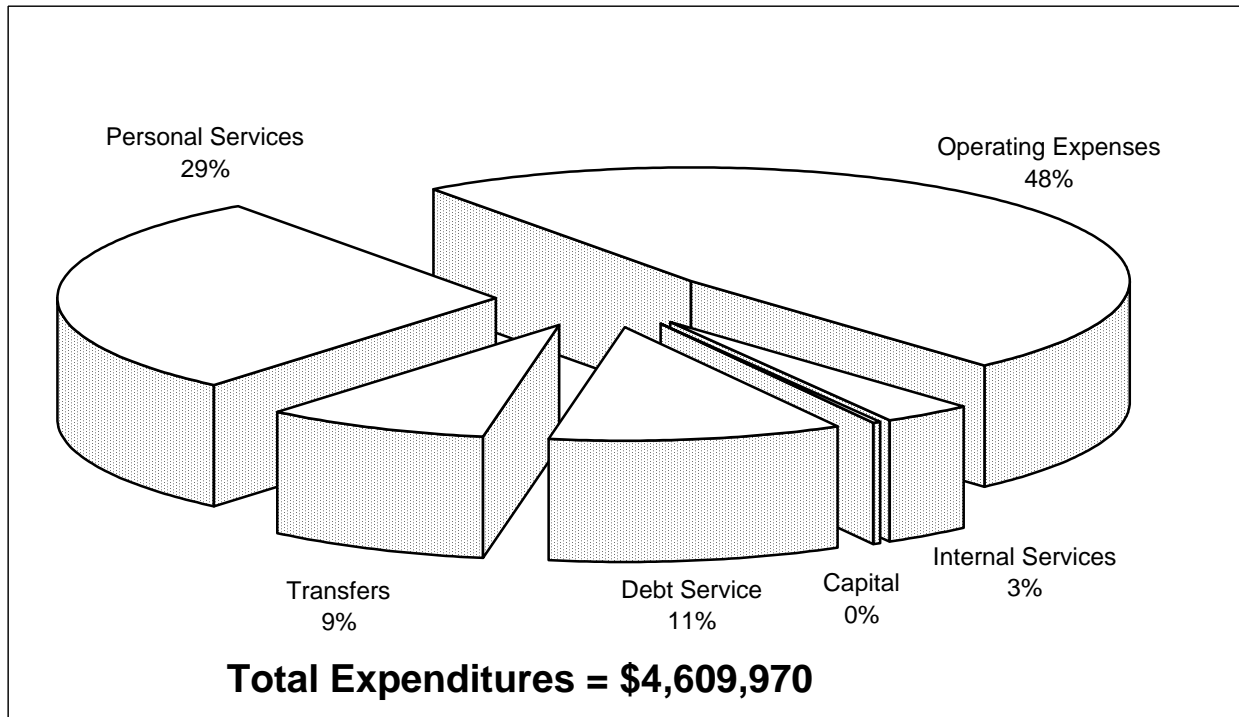


Parking Fund Expenditures by Type



Parking operating revenues are generated through parking receipts, fines, rentals, and miscellaneous income derived from day-to-day operations. These revenues are used for the general operations of the Parking System, the Parking Enforcement program, the Beach Guard Operation at Clearwater Beach and for improvements and repairs to parking facilities. The latest rate increase was for downtown parking (meters, garage & permits) on December 1, 2002.

The Parking Fund contains three operations: 1) Parking Operations; 2) Parking Enforcement, both of which are contained in the Public Works Administration/Engineering Department; and 3) the Beach Guard Operations Program in the Marine & Aviation Department. Thirty-eight and one tenth (38.1) full-time equivalent positions are funded by these revenues, resulting in 30% of expenditures being personnel related. The Parking Enforcement Program was established in June of 2003 to provide a dedicated enforcement of parking both downtown and at the beach. Forty-five percent of all fund expenditures are related to operating expenses, some of which are \$257,000 to support the Jolley Trolley, \$488,000 for a contractual service to operate the attendant parking lots at the beach and \$200,000 for Pinellas County to process parking tickets.

Transfers, representing 9% of the total budget, include the \$310,000 transferred to the Capital Improvement Program to fund parking lot resurfacing and improvements, repairs to City owned parking garages, and maintenance of the life guard facility, and \$80,450 representing parking fine revenue net of the cost of enforcement and collection transferred to the General Fund.

Anticipated revenues for Fiscal Year 2005/06 are approximately \$4,782,260 and exceed anticipated expenditures by approximately \$172,290. Fiscal year end 9/30/2004 financial statements reflect a net income of approximately \$1,035,090.