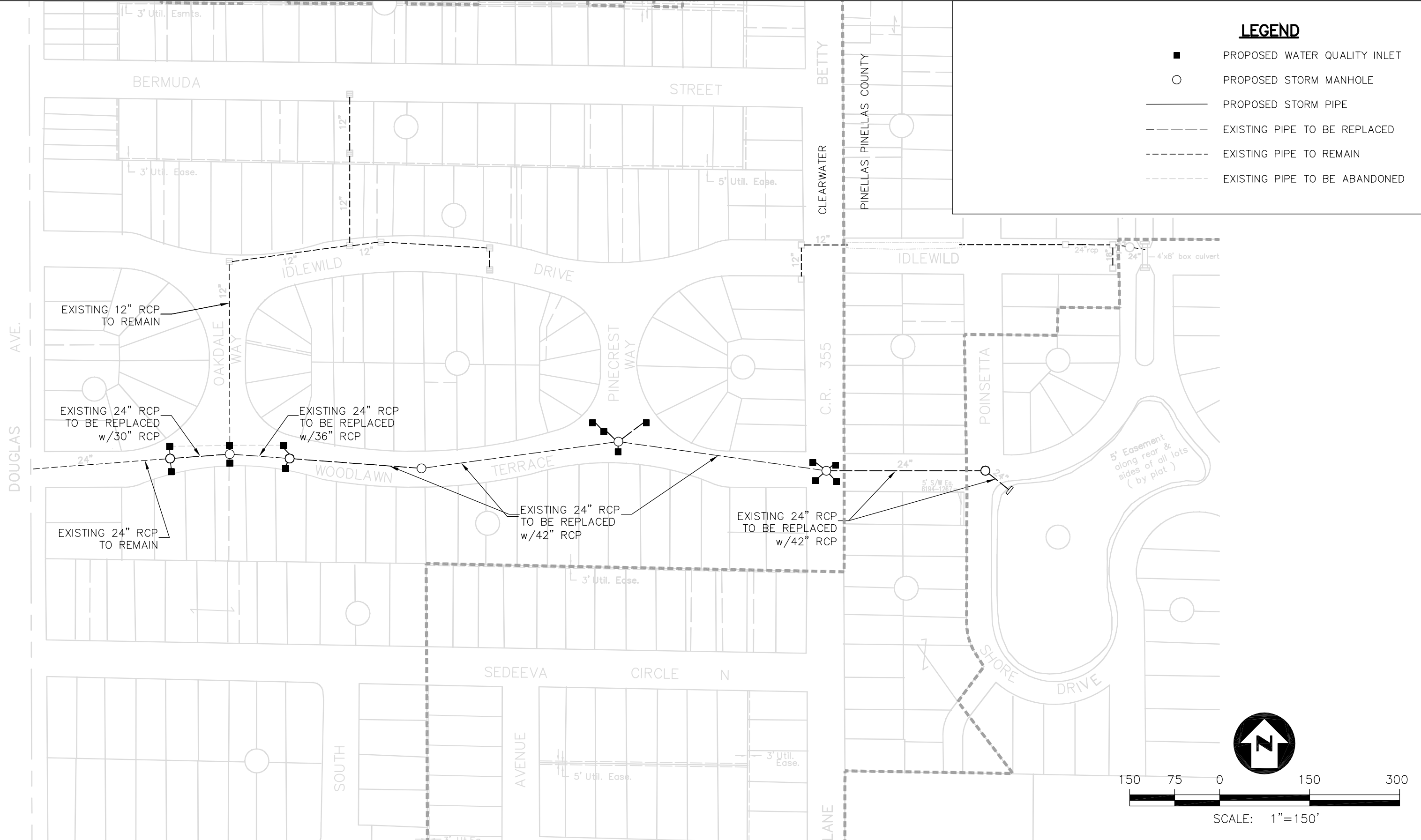


LEGEND

- PROPOSED WATER QUALITY INLET
- PROPOSED STORM MANHOLE
- PROPOSED STORM PIPE
- - - EXISTING PIPE TO BE REPLACED
- - - EXISTING PIPE TO REMAIN
- - - EXISTING PIPE TO BE ABANDONED



SCALE: 1"=150'

STEVENSON CREEK WATERSHED MANAGEMENT PLAN

FIGURE 3.1-8



**THE CITY OF
CLEARWATER, FLORIDA**



**PARSONS
ENGINEERING
SCIENCE, INC.**
Tampa, Florida
(813) 933-4650

**PROJECT 1D WOODLAND TERRACE
STORM SEWER REPLACEMENT**

No XREFs
J:\DATA\737626\gis\Easements\EXHIBITS2.dwg, 06/06/2001 at 08:55, M. BAKER, 1/150