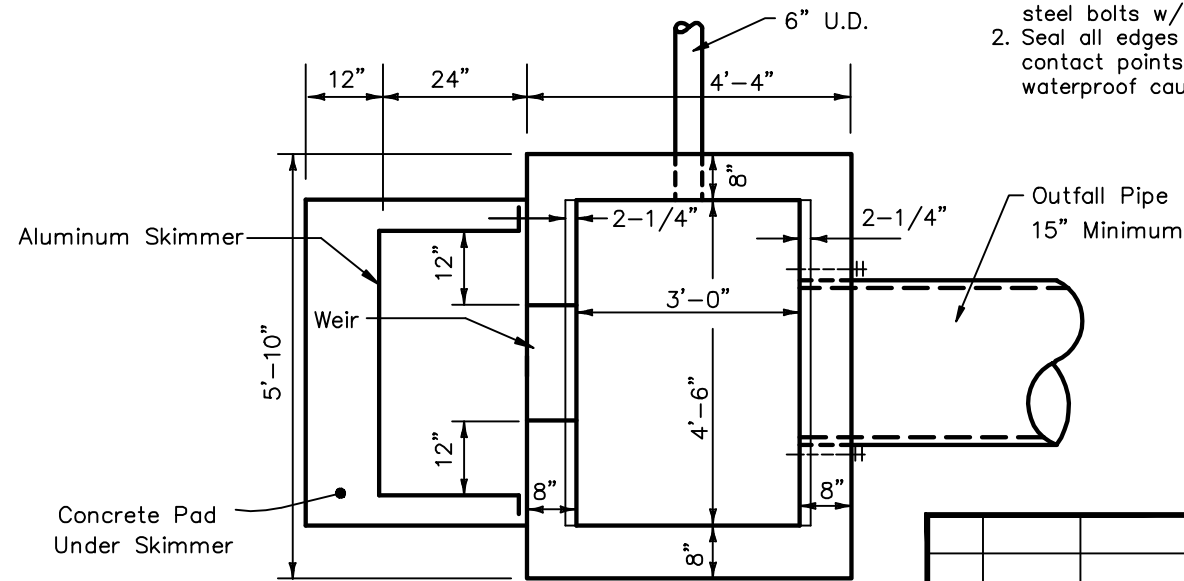


Straight Bars 2" x 3/16"  
Reticuline Bars 1-1/4" x 3/16"  
Bands 1-1/2" x 1/4"  
Approx. Weight 215 Lbs.

- NOTES**
1. Fasten skimmer with 4 stainless steel bolts w/ lead anchors
  2. Seal all edges of skimmer at contact points with structure with waterproof caulking or approved equal



# STORM SEWER OUTFALL CONTROL STRUCTURE W/ UNDER DRAIN

CITY INDEX NO. 215; 1 OF 1  
N.T.S.

				CITY OF CLEARWATER, FLORIDA ENGINEERING DEPARTMENT		
				REDRAWN BY Novo	STORM SEWER	DATE 01/09
				CHECKED BY M.D.Q.	OUTFALL CONTROL	INDEX NO. 215
				DESIGNED BY A.C.	STRUCTURE	
REV.	DATE	DESCRIPTION	APP.		W/ UNDER DRAIN	1 OF 1