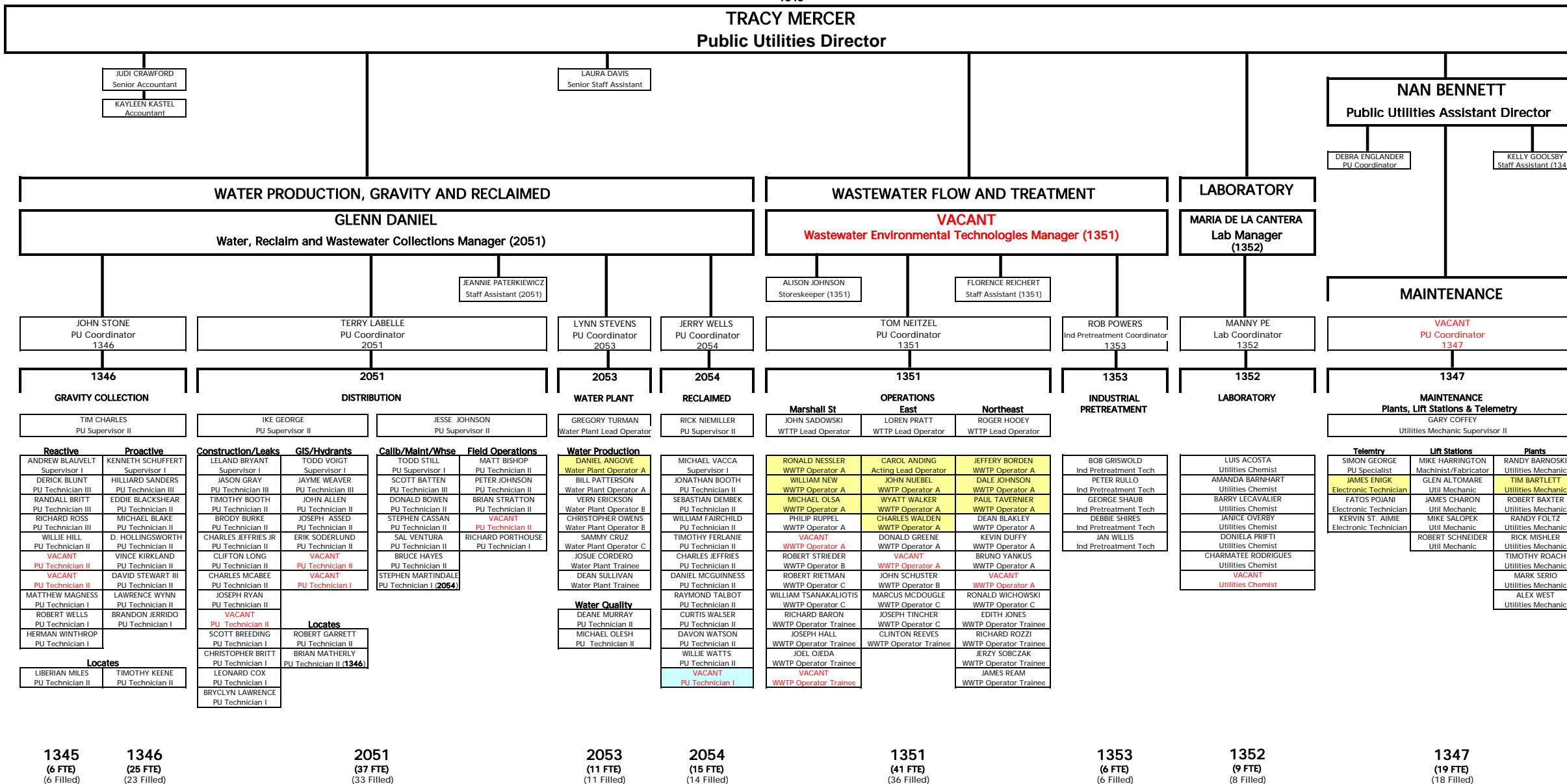


# PUBLIC UTILITIES DEPARTMENT

ADMINISTRATION  
1345

**TRACY MERCER**  
Public Utilities Director



**1345**  
(6 FTE)  
(6 Filled)

**1346**  
(25 FTE)  
(23 Filled)

**2051**  
(37 FTE)  
(33 Filled)

**2053**  
(11 FTE)  
(11 Filled)

**2054**  
(15 FTE)  
(14 Filled)

**1351**  
(41 FTE)  
(36 Filled)

**1353**  
(6 FTE)  
(6 Filled)

**1352**  
(9 FTE)  
(8 Filled)

**1347**  
(19 FTE)  
(18 Filled)

**Administration Division**  
6 Employees

**Water Production, Gravity & Reclaimed Division**  
88 Employees

**Wastewater Flow & Treatment Division**  
47 Employees

**Laboratory Division**  
9 Employees

**Maintenance Division**  
19 Employees

TOTAL PUBLIC UTILITIES DEPARTMENT FTE PERSONNEL FY 08/09 - 169

5% Lead Pay  
Additional FTE for FY08/09

(Effective 10/03/08)