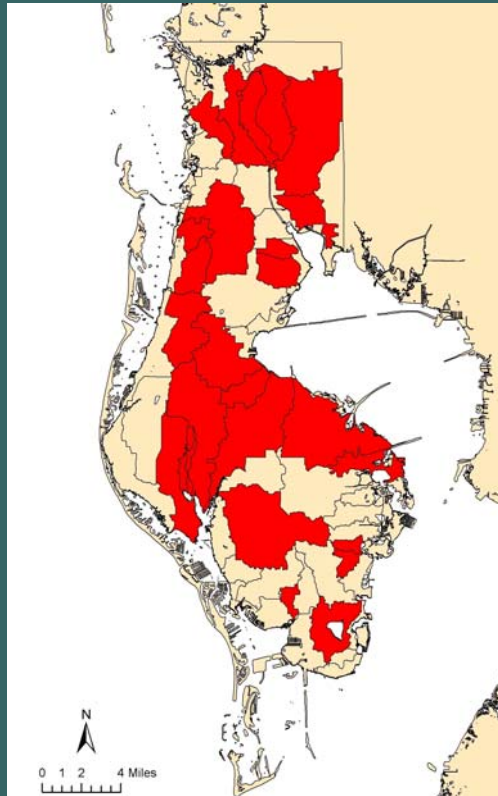


FEDERAL AND STATE DESIGNATED IMPAIRED WATERS IN PINELLAS COUNTY



**Our County depends
on clean water!**



For more information:

TMDLs on the EPA website:
<http://www.epa.gov/owow/tmdl/>

TMDLs at the State Level:
<http://www.dep.state.fl.us/water/tmdl/>

Local water quality information:
<http://www.pinellascounty.org/environment>
<http://wateratlas.org>

To report a water quality violation or illegal dumping: **727-464-5060** or **727-464-4425**

Watershed Management Division
300 South Garden Avenue
Clearwater, FL 33756

Phone: 727-464-4425
Fax: 727-64-4403

Email: watershed@pinellascounty.org

TMDL Image Courtesy of the Illinois EPA

TMDLs—What are they and what do they mean to our County?



Leadership Dedicated to a Sustainable Natural and Urban Environment in Pinellas County for Present and Future Generations

What is a TMDL?



A TMDL or Total Maximum Daily Load is the maximum amount of a pollutant that a waterbody can receive and still meet water quality standards. A TMDL also specifies an amount of the pollutant to specific sources. For example, if 100 pounds of pollutant

X is all that is allowed in the bay to protect water quality, then that 100 pounds of pollutant X is divided up among all the sources. The sources may be industries, farms, wastewater treatment plants, or permitted stormwater discharges. A TMDL could be considered a “pollutant diet” for a waterbody: if the pollutant load results in the waterbody meeting the water quality standard the waterbody is considered healthy, if it exceeds the standard the waterbody is judged unhealthy or impaired.

TOP 3 CAUSES OF IMPAIRMENT IN FLORIDA WATERS

- #1—NUTRIENTS (fertilizer)
- #2—DISSOLVED OXYGEN
- #3—BACTERIA

TMDL Program Phases

- Phase I—Initial Water Quality Evaluation
- Phase II—Water Quality Monitoring and Assessment
- Phase III—TMDL development and adoption
- Phase IV—Basin Management Action Plan (BMAP) development
- Phase V—Begin BMAP Implementation

Group 1—Tampa Bay Watershed

Group 5—Springs Coast Watershed (Gulf Coast)

	2000	2001	2002	2003	2004	2005	2006	2007	2008
Group 1	Phase I	Phase 2	Phase 3	Phase 4	Phase 5	Phase I	Phase 2	Phase 3	Phase 4
Group 2		Phase I	Phase 2	Phase 3	Phase 4	Phase 5	Phase I	Phase 2	Phase 3
Group 3			Phase I	Phase 2	Phase 3	Phase 4	Phase 5	Phase I	Phase 2
Group 4				Phase I	Phase 2	Phase 3	Phase 4	Phase 5	Phase I
Group 5					Phase I	Phase 2	Phase 3	Phase 4	Phase 5



What is a BMAP?

A Basin Management Action Plan or BMAP is like a road map that guides a community towards improving water quality and meeting a TMDL

What do TMDLs mean to Pinellas County?

- As a built-out community surrounded by water the potential for TMDL development is high.
- Pinellas County has several permitted point sources and a federally permitted stormwater system that will need to be assessed for potential improvements.
- Due to the age of our communities, treatment of large volumes of previously untreated stormwater is likely to be required.
- Implementation of TMDLs through the BMAP process will likely become a federal stormwater permit requirement.
- Cleaning up the County’s impaired waters will cost millions of dollars.
- Improvements to unhealthy waters will be required under state and federal regulations.



HOW WE CAN HELP

RESIDENTS—Reduce fertilizer usage, recycle yard debris, pick up after pets, wash cars at a carwash, fix fluid leaks from cars.

BUSINESSES—Keep outdoors areas clean, do not allow chemicals to be stored outdoors or to leak onto the ground.

CONSTRUCTION—Prevent soil erosion by maintaining a clean site.

LOCAL GOVERNMENTS—Implement policies to foster sustainable clean water practices, enforce stormwater violations and fund projects to restore waterways.